

Thermo Scientific Heracell 150i CO₂ Incubators

Surround your valuable cultures
with an environment you can trust

90°C moist heat decontamination for proven protection

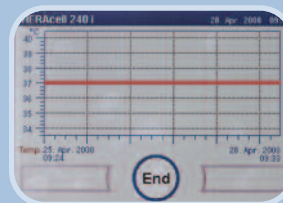
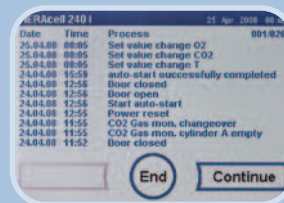
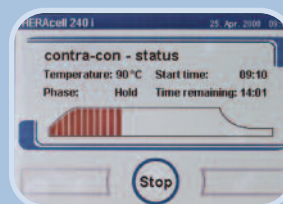
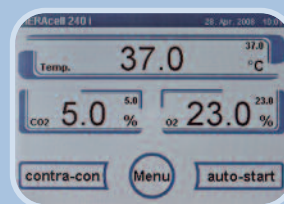
Thermo Scientific Heracell i CO₂ incubators come standard with an on-demand, automatic 90°C decontamination function that decontaminates the entire chamber interior without the need to remove sensors, fittings and shelves. Independent laboratory tests have validated that 90°C moist heat decontamination is highly effective against a wide range of contaminants, including mycoplasma.

- Electropolished stainless steel interior with 5.3 cu. ft. chamber capacity
- Thermo Scientific iCAN touchscreen places total control and complete information at your fingertips
- 90°C moist heat decontamination function allows total contamination control, without removing sensors
- Choice of TC or IR CO₂ control to meet your applications needs
- Convenient dual stack configurations on caster-mounted stands double useful capacity and save valuable lab space
- Unique pan-less humidity water reservoir provides faster humidity recovery, promoting improved cell growth

Thermo Scientific Heracell 150i CO₂ Incubators

iCAN touchscreen improves your visibility and control of important incubator information helping you to achieve your culturing goals

- Door mounted for easy accessibility and viewing
- Easy to use: convenient on-screen user prompts
- Select from a variety of languages
- Visibility to changes in culture environment: on screen logs and usage recording view changes in culture environment etc.
- Monitor alarm alerts visually on the display
- On board data logging with optional USB output



PRODUCT SPECIFICATIONS

TEMPERATURE

Control	±0.1°C
Range	3°C above ambient to 55°C (131°F)*
Uniformity	±0.3°C @ 37°C (98.6°F)
Tracking Alarm	User-programmable high/low

TEMPERATURE SAFETY

Sensor	Independent thermostat
Controller	Independent analog electronic
Setability	0.1%

CO₂

CO ₂ Control	Better than ±0.1%
CO ₂ Range	0-20%
Inlet Pressure Required	15 PSIG (1.0 bar)
CO ₂ Sensor	TC or IR
Readability & Setability	0.1%
Tracking Alarm	User-programmable low

HUMIDITY

RH	Ambient to 95% @ 37°C (98.6°F)
Humidity Source	3.2 qt. (3.0 L) pan-less reservoir

FITTINGS

Access Port with Filter	1.1/4" (32 mm) with removable silicone plug
CO ₂ Inlet	1/8" hose (barbed)

UNIT HEAT LOAD

120V	273 BTU/Hr
------	------------

SHELVS

Dimensions (w x h) inch/cm	16.7 x 17.5 (42.3 x 44.5)
Construction	Stainless steel, perforated
Surface Area	2.03 sq. ft. (0.18 sq. m)
Max. per Chamber	6.0 sq. ft. (0.54 sq. m)
Standard, Maximum	3, 10

CONSTRUCTION

Interior Volume	5.3 cu. ft. (150 L)
Interior	Type 304, mirror finish, stainless steel
Exterior	18 gauge, cold-rolled steel, powder coated

ELECTRICAL

Rated Voltage	120V, 60Hz
Circuit Breaker/Power Switch	20 Amps
Plug	NEMA 5-15
Alarm Contacts	Power interruption; deviation of temp, CO ₂
Data Outputs	RS 232

DIMENSIONS

Exterior (w x h x d) inch/cm	25 x 34 x 30.2 (63.7 x 86.7 x 76.6)
Interior (w x h x d) inch/cm	18.5 x 23.9 x 20.9 (47 x 60.7 x 53)

WEIGHT

Net	165 lbs (75 kg)
Shipping	195 lbs (87 kg)

ORDERING INFORMATION

CAT. NO.	DESCRIPTION
51026282	Heracell 150i Direct Heat CO ₂ Incubator, 5.3 cu. ft. capacity stainless steel chamber, w/ TC CO ₂ sensor, 120V, 60Hz
51026406	Heracell 150i Direct Heat CO ₂ Incubator, 5.3 cu. ft. capacity stainless steel chamber, w/ IR CO ₂ sensor, 120V, 60Hz
50116048	Heracell 150i Direct Heat Dual Stack, 2 x 5.3 cu. ft. capacity stainless steel chambers, w/ TC CO ₂ sensor, 120V, 60Hz and mobile support stand
50057161	Roller base, support frame
50051909	Additional stainless steel shelf, full-width, 2 support rails
50059043	External Gas Guard
95001012	CO ₂ gas regulator, 2-stage